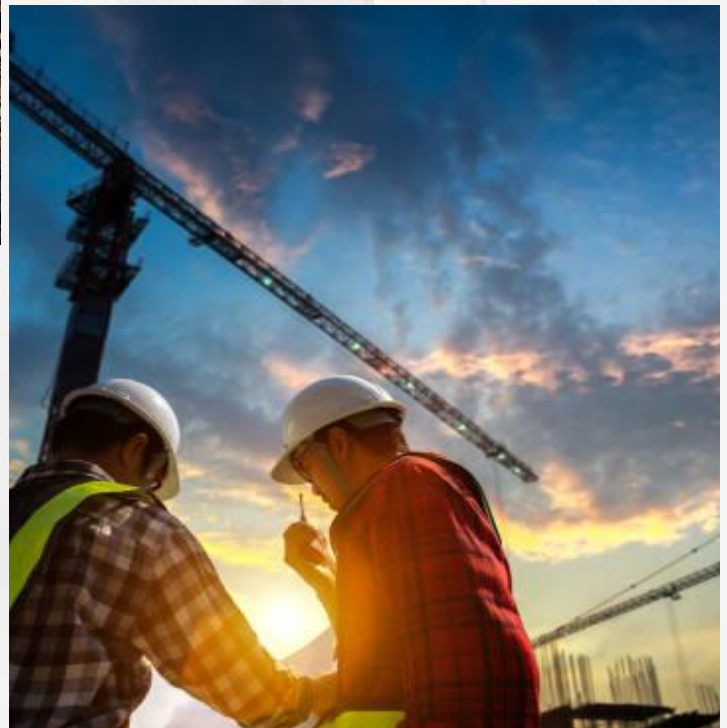




REDEFINING LEGACIES

ABHIMA INFRA TECH

Delivering Exceptional Value and Service....



+91 9697979673

www.sasyit.com

Sreya Towers, Jubilee Hills,
Hyderabad, TS, India



ABOUT US

Abhima InfraTech is a dynamic construction and infrastructure company committed to transforming ideas into enduring realities. As a proud subsidiary of the **Abhima Group**, we specialize in delivering projects that span the full spectrum, from initial blueprints to solid, functional builds.

Our expertise covers residential, commercial, and industrial developments, backed by a team of seasoned professionals and dynamic technology. Whether it's designing, planning, executing, or managing, we ensure every phase is handled with precision, transparency, and excellence.

At **Abhima InfraTech**, we don't just build structures, we build trust, value, and long-term partnerships.

Mission

To ensure every project meets the highest standards and exceeds client expectations.

Vision

To be a leading force in infrastructure development, known for thoughtful design and unwavering execution.





Abhima Infratech, along with other major subsidiaries, is part of the **ABHIMA GROUP**, a dynamic and diversified parent entity.

ABHIMA GROUP encompasses a portfolio of companies committed to driving innovation, enhancing operational efficiency, and delivering holistic solutions across a range of industries.

Leveraging its proficiency in both commercial and residential construction, along with a flexible approach to infrastructure development, **ABHIMA** delivers sustainable and high-caliber environments that serve the needs of communities and businesses.

Additionally, **ABHIMA** brings its strengths to advanced technology and customized IT solutions, excelling in software development, Telecom BSS/OSS, app creation, LMS, IT staffing, managed services, and technology integration, ensuring exceptional service customized to every client.

Few of our entities...

- Abhima Technologies Pvt Ltd (APAC, India)
(formerly known as SourceOn Apps Pvt Ltd)
- Abhima Technologies Inc (US)
- Abhima Infratech Private Limited
- SourceOn PCNS Projects
- SAIPSIT Private Limited
- Abhima Securities & Automation
- Abhima Lawns & Conventions
- Abhima Projects
- Abhima Supplies
- Abhima Farms



OUR SERVICES

We deliver agile, scalable, and client-focused technology solutions. Our deep domain expertise enables us to optimize complex operations, enhance project efficiency, and support data-driven decision-making—empowering businesses to thrive in a digitally connected world.



COMMERCIAL CONSTRUCTIONS

Buildings including offices, retail complexes, shopping malls, and hospitality centers.



HOUSING PROJECTS

Housing projects including standalone homes, apartment complexes, and gated communities.



COMPLEX STRUCTURES

Structures such as industrial facilities, multi-level frameworks, bridges, dams, canals, etc.



INFRASTRUCTURE DEVELOPMENT

Projects including transportation systems, utilities, bridges, and public facilities.



EARTH WORKS & EXCAVATION

Services including site grading, trenching, land clearing, and soil stabilization.

PROJECTS in PROGRESS

We are actively executing a series of housing and residential construction projects for our valued clients **Transsoft Infra**, **Shikriti Infratech**, and **Saipsit Infra LLP**.

These projects are strategically located in rapidly developing urban zones, each designed to offer thoughtfully planned living environments that combine durability, comfort, and contemporary aesthetics.

Our approach integrates advanced construction methodologies and smart project management systems to ensure cost efficiency, timely delivery, and uncompromised quality.

Emphasis is placed on environmental sustainability through the use of eco-friendly materials, energy-efficient solutions, and optimized resource utilization.

These developments exemplify our dedication to building future-ready communities that cater to the diverse needs of today's residents—balancing modern lifestyles with responsible infrastructure growth.



OUR POTENTIAL

- **Smart Infrastructure Integration** leveraging digital tools for enhanced planning, monitoring, and lifecycle management
- **Modern Housing Designs** combining functionality, sustainability, and aesthetic appeal
- **Efficient Construction Practices** focused on timely delivery and cost-effective execution
- **Sustainable Building Solutions** incorporating eco-conscious materials and technologies
- **Collaborative Client Engagement** ensuring alignment with vision, quality, and performance standards

OUR CLIENTS

We are privileged to work alongside visionary institutions committed to growth, learning, and infrastructure development. Our partnerships speak to our reputation for delivering excellence in every phase of construction



LET'S BUILD THE
FUTURE TOGETHER

THANK YOU!

We are located at . . .

Sri Venkata Sai Complex, Road No.10, Kavuri Hills,
Guttala Begumpet, Madhapur, Hyderabad - 500081.
Telangana.

Work With Us →

+91 90635 85823